



SHREE ARBUDA STEEL

“QUALITY MAKERS”

Manufacturers & Stockist, Suppliers of Stainless Steel Forge Flanges, Forge Fitting in all Grade, Size & Shape, Ferrous & Non-Ferrous Metals.





SHREE ARBUDA STEEL

Mobile : +91 8108105140 / 8850182889



Company Profile



Shree Arbuda Steel was founded, it has been our mission to not only manufacture butt-weld fittings, long radius (3D, 5D, Customized) bends and large diameter welded 2 Halves Pipe Fittings but also provide complete piping package solutions to our customers.

By flexibility, skill, experience and dedication to our work as well as long-standing relationships with leading manufacturers for all piping related products, we have become over the years a well-known and leading supplier to EPC and End users across the globe.

We have also become a ONE STOP SHOP for reliable Indian origin Piping Supplies for various stockists and traders around the world. Hard-to-find items, short delivery times, rare material grades and similar tasks are just as much our daily business as standard items from mass production. We find solutions for your individual requirements.

We have our own in-house inspection and commissioning staff enabling us to satisfy each customer's individual logistical requirements.

Quality Policy

Quality is our mission, the quality policy is our main tool in achieving it.

Utmost Satisfaction of client's expectation.

Innovative, Cost and time effective services

Consistent and Continuous quality improvement

Fulfillments of defined quality objective targets

Develop the organization as an International for excellence

Continuous evaluation of market to explore challenging areas of operation

The group is determined to improve productivity and focus continuously on and people



Testing Facility Available

- Chemical Analysis
- Mechanical Tests
- Metallography Test
- Hydrostatic
- Corrosion Test
- Ultrasonic Test
- Radiography
- Miscellaneous Test



SHREE ARBUDA STEEL

Mobile : +91 8108105140 / 8850182889



FLANGES.....



Stainless Steel	: ASTM A182, F304,304L,304H,316, 316L,317,317L,321,310,347,904L
Carbon Steel	: ASTM A105,A694 F42,A350 Lf2
Duplex & Super Duplex	: UNS S31803, UNS S32750, UNS S32760,
Hastelloy Alloy	: ASTM B564 Hastelloy B2, C276, C22
Incoloy Alloys	: ASTM B564 Alloy 20, Alloy A286 Alloy 800H/800HT, Alloy 825,
Inconel Alloys	: ASTM B564 Alloy 600, Alloy 601, Alloy 625, Alloy 718, Alloy 725,
Monel Alloys	: ASTM B564 Monel 400, Monel K500.
Alloy Steel	: ASTM A182 F1,F5,F9,F11,F22,F91
Size	: 1/2" NB TO 72" NB
Class	: 150#, 300#, 600#, 900#, 1500# & 2500#.

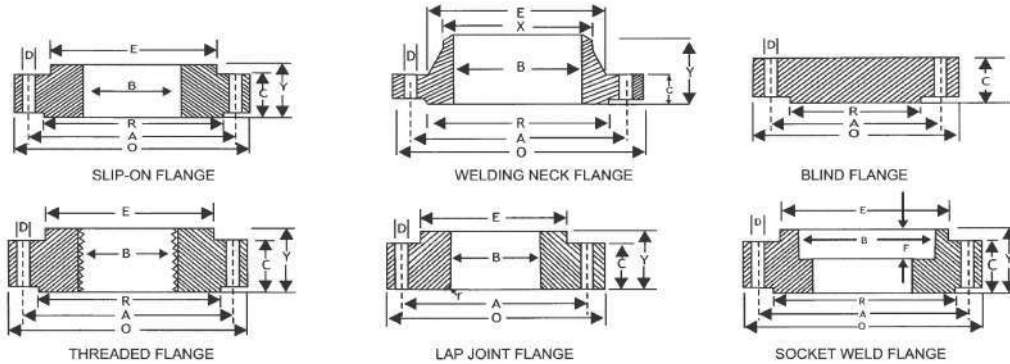
TYPE

- SLIP-ON FLANGE
- LAP JOINT FLANGE
- WELDNECK FLANGE
- ORIFACE FLANGE
- LONG WELD NECK FLANGE
- THREADED FLANGE
- SOCKETWELD FLANGE
- BLIND FLANGE (DUMMY FLANGE)
- RTJ FLANGE
- TABLE FLANGES (D, E, F, H TABLE)



SHREE ARBUDA STEEL

Mobile : +91 8108105140 / 8850182889



Dimensions of Class 150 Flanges as per ANSI B 16.5

Nominal Pipe Size	Flange Dia O	Dia of Bolt Circle A	No. Of Bolt Holes D	No. Of Holes	Thk of Flange C	Dia of Hub E	Length through Hub			Dia Bore		Dia of R/F R	Depth of Socket F	Pipe Dia X
							S/O & S/W Y	W/N Y	L/J Y	S/O & S/W B	L/J B			
15	88.9	60.3	15.9	4	11.1	30.2	15.9	47.6	15.9	22.3	22.9	34.9	9.5	21.33
20	98.4	69.8	15.9	4	12.7	38.1	15.9	52.4	15.9	27.7	28.2	42.9	11.1	26.67
25	107.9	79.4	15.9	4	14.3	49.2	17.5	55.6	17.5	34.5	35.0	50.8	12.7	33.40
32	117.5	88.9	15.9	4	15.9	58.7	20.6	57.1	20.6	43.2	43.7	63.5	14.3	42.16
40	127.0	98.4	15.9	4	17.5	65.1	22.2	61.9	22.2	49.5	50.0	73.0	15.9	48.26
50	152.4	120.6	19.0	4	19.0	77.8	25.4	63.5	25.4	62.0	62.5	92.1	17.5	60.31
65	177.8	139.7	19.0	4	22.2	90.5	28.6	69.8	28.6	74.7	75.4	104.8	19.0	73.02
80	190.5	152.4	19.0	4	23.8	107.9	30.2	69.8	30.2	90.7	91.4	127.0	20.6	88.90
100	228.6	190.5	19.0	8	23.8	134.9	33.3	76.2	33.3	116.1	116.8	157.2	23.8	114.30
125	254.0	215.9	22.2	8	23.8	163.5	36.5	88.9	36.5	143.8	144.5	185.7	23.8	141.30
150	279.4	241.3	22.2	8	25.4	192.1	39.7	88.9	39.7	170.7	171.4	215.9	27.0	168.27
200	342.9	298.4	22.2	8	28.6	246.1	44.4	101.6	44.4	221.5	222.2	269.9	31.7	219.07
250	406.4	361.9	25.4	12	30.2	304.8	49.2	101.6	49.2	276.3	277.4	323.8	33.3	273.05
300	482.6	431.8	25.4	12	31.8	365.1	55.6	114.3	55.6	327.1	328.2	381.0	39.7	323.85
350	533.4	476.2	28.6	12	34.9	400.0	57.1	127.0	79.4	359.1	360.2	412.7	41.3	355.60
400	596.9	539.7	28.6	16	36.5	457.2	63.5	127.0	87.3	410.5	411.2	469.9	44.4	406.40
450	635.0	577.8	31.7	16	39.7	504.8	68.3	139.7	96.8	461.8	462.3	533.4	49.2	457.20
500	698.5	635.0	31.7	20	42.9	558.8	73.0	144.5	103.2	513.1	514.3	584.2	54.0	508.00
600	812.8	749.3	34.9	20	47.6	663.6	82.5	152.4	111.1	615.9	615.9	692.1	63.5	609.60

Dimensions of Class 300 Flanges as per ANSI B 16.5

Nominal Pipe Size	Flange Dia O	Dia of Bolt Circle A	No. Of Bolt Holes D	No. Of Holes	Thk of Flange C	Dia of Hub E	Length through Hub			Dia Bore		Dia of R/F R	Depth of Socket F	Pipe Dia X
							S/O & S/W Y	W/N Y	L/J Y	S/O & S/W B	L/J B			
15	95.2	66.7	15.9	4	14.3	38.1	22.2	52.4	22.2	22.3	22.9	34.9	9.5	21.33
20	117.5	82.5	19.0	4	15.9	47.6	25.4	57.1	25.4	27.7	28.2	42.9	11.1	26.67
25	123.8	88.9	19.0	4	17.5	54.0	27.0	61.9	27.0	34.5	35.0	50.8	12.7	33.40
32	133.3	98.4	19.0	4	19.0	63.5	27.0	65.1	27.0	43.2	43.7	63.5	14.3	42.16
40	155.6	114.3	22.2	4	20.6	69.8	30.2	68.3	30.2	49.5	50.0	73.0	15.9	48.26
50	165.1	127.0	19.0	8	22.2	84.1	33.3	69.8	33.3	62.0	62.5	92.1	17.5	60.31
65	190.5	149.2	22.2	8	25.4	100.0	38.1	76.2	38.1	74.7	75.4	104.8	19.0	73.02
80	209.5	168.3	22.2	8	28.6	117.5	42.9	79.4	42.9	90.7	91.4	127.0	20.6	88.90
100	254.0	200.0	22.2	8	31.8	146.0	47.6	85.7	47.6	116.1	116.8	157.2	23.8	114.30
125	279.4	234.9	22.2	8	34.9	177.8	50.8	98.4	50.8	143.8	144.5	185.7	-	141.30
150	317.5	269.9	22.2	12	36.5	206.4	52.4	98.4	52.4	170.7	171.4	215.9	-	168.27
200	381.0	330.2	25.4	12	41.3	260.3	61.9	111.1	61.9	221.5	222.2	269.9	-	219.07
250	444.5	387.3	28.6	16	47.6	320.7	66.7	117.5	95.2	276.3	277.4	323.8	-	273.05
300	520.7	450.8	31.7	16	50.8	374.6	73.0	130.2	101.6	327.1	328.2	381.0	-	323.85
350	584.2	514.3	31.7	20	54.0	425.4	76.2	142.9	111.1	359.1	360.2	412.7	-	355.60
400	647.7	571.5	34.9	20	57.2	482.6	82.5	146.0	120.6	410.5	411.2	469.9	-	406.40
450	711.2	628.5	34.9	24	60.3	533.4	88.9	158.7	130.2	461.8	462.3	533.4	-	457.20
500	774.7	685.8	34.9	24	63.5	587.4	95.2	161.9	139.7	513.1	514.3	584.2	-	508.00
600	914.4	812.8	41.3	24	69.8	701.7	106.4	168.3	152.4	615.9	615.9	692.1	-	609.60

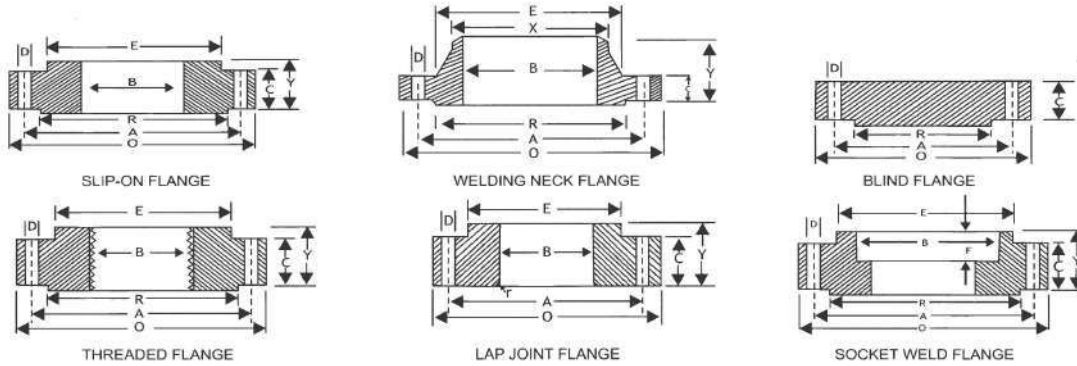
Metric values are direct conversion from Inches table of B16.5

Flanges except Lap Joint will be furnished with (1.6 mm) raised face, Which is included in " Thickness" (C) and Length through Hub (Y).



SHREE ARBUDA STEEL

Mobile : +91 8108105140 / 8850182889



Dimensions of Class 600 Flanges as per ANSI B 16.5

Nominal Pipe Size	Flange Dia O	Dia of Bolt Circle A	No. of Bolt Holes D	No. of Holes	Thk of Flange C	Dia of Hub E	Length through Hub			Dia Bore		Dia of R/F R	Depth of Socket F	Pipe Dia X
							S/O & S/W	WN	L/J	S/O & S/W	L/J			
							Y	Y	Y	B	B			
15	95.2	66.7	15.9	4	14.3	38.1	22.2	52.4	22.3	22.3	22.8	34.9	9.5	21.33
20	117.5	82.5	19.0	4	15.9	47.6	25.4	57.1	25.4	27.7	28.1	42.9	11.1	26.67
25	123.8	88.9	19.0	4	17.5	54.0	27.0	61.9	26.9	34.5	35.0	50.8	12.7	33.40
32	133.3	98.4	19.0	4	20.6	63.5	28.6	66.7	28.4	43.2	43.6	63.5	14.2	42.16
40	155.6	114.3	22.2	4	22.2	69.8	31.7	69.8	31.7	49.5	50.0	73.0	15.8	48.26
50	165.1	127.0	19.0	8	25.4	84.1	36.5	73.0	36.5	62.0	62.4	92.1	17.4	60.31
65	190.5	149.2	22.2	8	28.6	100.0	41.3	79.4	41.1	74.7	75.4	104.8	19.0	73.02
80	209.5	168.3	22.2	8	31.8	117.5	46.0	82.5	45.9	90.7	91.4	127.0	-	88.90
100	273.0	215.9	25.4	8	38.1	152.4	54.0	101.6	53.8	116.1	116.8	157.2	-	114.30
125	330.2	266.7	28.6	8	44.4	188.9	60.3	114.3	60.4	143.8	141.5	185.7	-	141.30
150	355.6	292.1	28.6	12	47.6	222.2	66.7	117.5	66.5	170.7	171.4	215.9	-	168.27
200	419.1	349.2	31.7	12	55.6	273.0	76.2	133.3	76.2	221.5	222.2	269.9	-	219.07
250	508.0	431.8	34.9	16	63.5	342.9	85.7	152.4	111.2	276.3	277.3	323.8	-	273.05
300	558.8	488.9	34.9	20	66.7	400.0	92.1	155.6	117.3	327.1	328.1	381.0	-	323.85
350	603.2	527.0	38.1	20	69.9	431.8	93.7	165.1	127.0	359.1	360.1	412.7	-	355.60
400	685.8	603.2	41.3	20	76.2	495.3	106.4	177.8	139.7	410.5	411.2	469.9	-	406.40
450	742.9	654.0	44.4	20	82.6	546.1	117.5	184.1	152.4	461.8	462.2	533.4	-	457.20
500	812.8	723.9	44.4	24	88.9	609.6	127.0	190.5	165.1	513.1	514.3	584.2	-	508.00
600	939.8	838.2	50.8	24	101.6	717.5	139.7	203.2	184.1	615.9	615.9	692.1	-	609.60

Dimensions of Class 900 Flanges as per ANSI B 16.5

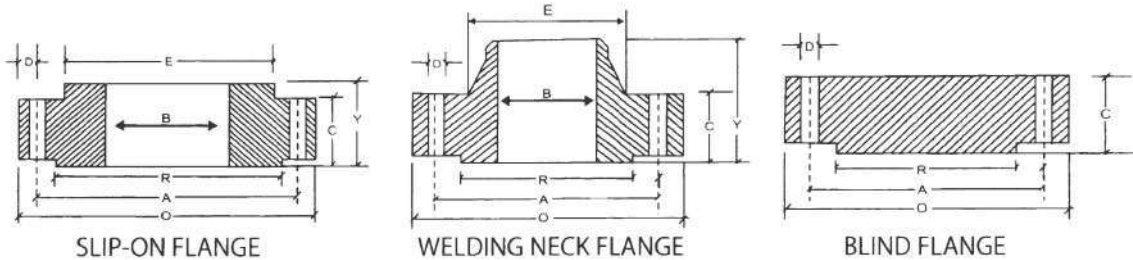
Nominal Pipe Size	Flange Dia O	Dia of Bolt Circle A	Dia of Bolt Holes D	No. of Holes	Thk of Flange C	Dia of Hub E	Length through Hub			Dia Bore		Dia of R/F R	Depth of Socket F	Pipe Dia X
							S/O & S/W	WN	L/J	S/O & S/W	L/J			
							Y	Y	Y	B	B			
15	120.6	82.5	22.2	4	22.2	38.1	31.7	60.3	31.7	22.3	22.8	34.9	9.5	21.33
20	130.2	88.9	22.2	4	25.4	44.4	34.9	69.8	35.0	27.7	28.1	42.9	11.1	26.67
25	149.2	101.6	25.4	4	28.6	52.4	41.3	73.0	41.1	34.5	35.0	50.8	12.7	33.40
32	158.7	111.1	25.4	4	28.6	63.5	41.3	73.0	41.1	43.2	43.6	63.5	14.2	42.16
40	177.8	123.8	28.6	4	31.8	69.8	44.4	82.5	44.4	49.5	50.0	73.0	15.8	48.26
50	215.9	165.1	25.4	8	38.1	104.8	57.1	101.6	57.1	62.0	62.4	92.1	17.4	60.31
65	244.5	190.5	28.6	8	41.3	123.8	63.5	104.8	63.5	74.7	75.4	104.8	19.0	73.02
80	241.3	190.5	25.4	8	38.1	127.0	53.9	101.6	53.8	90.7	91.4	127.0	-	88.90
100	292.1	234.9	31.7	8	44.4	158.7	69.8	114.3	69.8	116.0	116.8	157.1	-	114.30
125	349.2	279.4	35.0	8	50.8	190.5	79.3	127.0	79.2	143.7	144.5	185.7	-	141.30
150	381.0	317.5	31.7	12	55.6	234.9	85.8	139.7	85.8	170.6	171.4	215.9	-	168.27
200	469.9	393.7	38.1	12	63.5	298.4	101.6	162.0	114.3	221.4	222.2	269.9	-	219.07
250	546.1	469.9	38.1	16	69.8	368.3	107.9	184.1	127.0	276.3	277.3	323.8	-	273.05
300	609.6	533.4	38.1	20	79.3	419.1	117.4	200.0	142.7	327.1	328.1	381.0	-	323.85

Metric values are direct conversion from Inches table of B16.5
RF Thickness 6.3 mm Extra to be provided (Except Lap Joint Flange & FF Flanges).



SHREE ARBUDA STEEL

Mobile : +91 8108105140 / 8850182889



DIMENSIONS OF CLASS 150 FLANGES AS PER ANSI B 16.5

Nominal Pipe Size	Flange Dia	Dia of Bolt Circle A	Dia of Bolt Holes D	Dia of Holes	Thk of Flange C	Dia of Hub E	Length through Hub			Dia of Bore		Dia of R/F R	Depth of Socket F	Pipe Dia X	
							S/O & S/W Y	W/N Y	L/J Y	S/O & S/W B	L/J Y				
(MM)	(INCH.)	O	A	D	C	E	Y	Y	Y	B	Y	R	F	X	
15	1/2	120.6	82.5	22.2	4	22.2	38.1	31.7	60.3	31.7	22.3	22.8	34.9	9.5	21.33
20	3/4	130.2	88.9	22.2	4	25.4	44.4	34.9	69.8	34.9	27.7	28.1	42.9	11.1	26.67
25	1	149.2	101.6	25.4	4	28.6	52.4	41.3	73.0	41.3	34.5	35.0	50.8	12.7	33.40
32	1 1/4	158.7	111.1	25.4	4	28.6	63.5	41.3	73.0	41.3	43.2	43.6	63.5	14.2	42.16
40	1 1/2	177.8	123.8	28.6	4	31.8	69.8	44.4	82.5	44.4	49.5	50.0	73.0	15.8	48.26
50	2	215.9	165.1	25.4	8	38.1	104.8	57.1	101.6	57.1	62.0	62.0	92.1	17.4	60.31
65	2 1/2	244.5	190.5	28.6	8	41.3	123.8	63.5	104.8	63.5	74.7	75.4	104.8	19.0	73.02
80	3	266.7	203.2	31.7	8	47.6	133.3	73.0	117.5	73.0	90.7	91.4	127.0	-	88.90
100	4	311.1	241.3	34.9	8	54.0	161.9	90.5	123.0	90.4	116.1	116.8	157.2	-	114.30
125	5	374.6	292.1	41.3	8	73.0	196.8	104.8	155.6	104.8	143.8	144.5	185.7	-	141.30
150	6	393.7	317.5	38.1	12	82.6	228.6	119.1	171.4	119.1	170.7	171.4	215.9	-	168.27
200	8	482.6	393.7	44.4	12	92.1	292.1	142.9	212.7	142.8	221.5	222.2	269.9	-	219.07
250	10	584.2	482.6	50.8	12	107.9	368.3	158.7	254.0	177.8	276.3	277.3	323.8	-	273.05
300	12	673.1	571.5	54.0	16	123.8	450.8	181.0	282.5	218.9	327.1	328.1	381.0	-	323.85

All Dimensions are in Millimeters • Flanges except Lap Joint will be furnished with (1.6mm) Raised Face, which is included in Thickness(C) and Length through Hub(Y).

DIMENSIONS OF CLASS 2500 FLANGES AS PER ANSI B 16.5

Nominal Pipe Size	Flange Dia	Dia of Bolt Circle A	Dia of Bolt Holes D	Dia of Holes	Thk of Flange C	Dia of Hub E	Length through Hub			Dia of Bore		Dia of R/F R	Depth of Socket F	Pipe Dia X	
							S/O & S/W Y	W/N Y	L/J Y	S/O & S/W B	L/J Y				
(MM)	(INCH.)	O	A	D	C	E	Y	Y	Y	B	Y	R	F	X	
15	1/2	133.3	88.9	22.2	4	30.2	42.9	39.7	73.0	39.7	22.3	22.3	34.9	-	21.33
20	3/4	139.7	95.3	22.2	4	31.7	50.8	42.9	79.4	42.9	27.7	27.7	42.9	-	26.67
25	1	158.7	107.9	25.4	4	34.9	57.1	47.7	88.9	47.7	34.5	34.5	50.8	-	33.40
32	1 1/4	184.1	130.2	28.6	4	38.1	73.0	52.4	95.2	52.4	43.2	43.2	63.5	-	42.16
40	1 1/2	203.2	146.0	31.7	4	44.4	79.4	60.3	111.1	60.3	49.5	49.5	73.0	-	48.26
50	2	234.9	171.4	28.6	8	50.8	95.2	69.8	127.0	69.8	62.4	62.0	92.1	-	60.31
65	2 1/2	266.7	196.8	31.7	8	57.1	114.3	79.4	142.9	79.4	74.7	74.7	104.8	-	73.02
80	3	304.8	228.6	34.9	8	66.7	133.3	92.1	168.3	92.1	90.7	90.7	127.0	-	88.90
100	4	355.6	273.0	41.2	8	76.2	165.1	107.9	190.5	107.9	116.1	116.1	157.2	-	114.30
125	5	419.1	323.8	47.6	8	92.1	203.2	130.0	228.6	130.0	143.8	143.8	185.7	-	141.30
150	6	482.6	368.3	54.0	8	107.9	234.9	152.4	273.0	152.4	170.7	170.7	215.9	-	168.27
200	8	552.4	438.1	54.0	12	127.0	304.8	177.8	317.5	177.8	221.5	221.5	269.9	-	129.07
250	10	673.1	539.7	66.7	12	165.1	374.6	228.6	419.1	228.6	276.3	276.3	323.8	-	273.05
300	12	762.0	619.1	73.0	12	184.1	441.3	254.0	463.5	254.0	327.1	327.1	381.0	-	323.85

All Dimensions are in Millimeters • Flanges except Lap Joint will be furnished with (1.6mm) Raised Face, which is included in Thickness(C) and Length through Hub(Y).



SHREE ARBUDA STEEL

Mobile : +91 8108105140 / 8850182889

FORGED FITTINGS & FLANGES ASTM

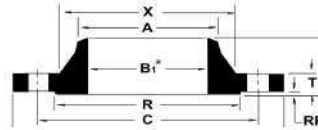
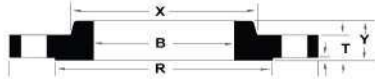
MATERIAL SPECIFICATION FOR FORGED FITTINGS & FLANGES

SPECIFICATION (ASTM-2002)	CHEMICAL PROPERTIES					MECHANICAL PROPERTIES					OTHERS		
	C%	Mn%	P% (Max)	S% (Max)	Si%	Cr%	Ni%	Mo%	U.T.S. (Min) Mpa	Y.S. (Min) Mpa		ELONG (Min) %	RED AREA %
STAINLESS STEEL													
A 182 Gr. F 304	0.080 Max	2.00 Max	0.045	0.030	1.00 Max	18.0-20.0	8.0-11.0	-	515	205	30	50	-
A 182 Gr. F 304L	0.030 Max	2.00 Max	0.045	0.030	1.00 Max	18.0-20.0	8.0-13.0	-	485	170	30	50	-
A 182 Gr. F 304H	0.04-0.10	2.00 Max	0.045	0.030	1.00 Max	18.0-20.0	8.0-11.0	-	515	205	30	50	-
A 182 Gr. F 304LN	0.030 Max	2.00 Max	0.045	0.030	1.00 Max	18.0-20.0	8.0-10.5	-	515	205	30	50	N ^o =0.10-0.16
A 182 Gr. F 309H	0.04-0.10	2.00 Max	0.045	0.030	1.00 Max	22.0-24.0	12.0-15.0	-	515	205	30	50	-
A 182 Gr. F 310	0.25 Max	2.00 Max	0.045	0.030	1.00 Max	24.0-26.0	19.0-22.0	-	515	205	30	50	-
A 182 Gr. F 316	0.080 Max	2.00 Max	0.045	0.030	1.00 Max	16.0-18.0	10.0-14.0	2.0-3.0	515	205	30	50	-
A 182 Gr. F 316L	0.030 Max	2.00 Max	0.045	0.030	1.00 Max	16.0-18.0	10.0-15.0	2.0-3.0	485	170	30	50	-
A 182 Gr. F 316H	0.04-0.10	2.00 Max	0.045	0.030	1.00 Max	16.0-18.0	10.0-14.0	2.0-3.0	515	205	30	50	-
A 182 Gr. F 316LN	0.030 Max	2.00 Max	0.045	0.030	1.00 Max	16.0-18.0	11.0-14.0	2.0-3.0	515	205	30	50	N ^o =0.10-0.16
A 182 Gr. F 317	0.080 Max	2.00 Max	0.045	0.030	1.00 Max	18.0-20.0	11.0-15.0	3.0-4.0	515	205	30	50	-
A 182 Gr. F 317L	0.030 Max	2.00 Max	0.045	0.030	1.00 Max	18.0-20.0	11.0-15.0	3.0-4.0	485	170	30	50	-
A 182 Gr. F 321	0.080 Max	2.00 Max	0.045	0.030	1.00 Max	17.0-19.0	9.0-12.0	-	515	205	30	50	Ti%=(5xC)-0.70
A 182 Gr. F 321H	0.04-0.10	2.00 Max	0.045	0.030	1.00 Max	17.0-19.0	9.0-12.0	-	515	205	30	50	Ti%=(4xC)-0.70
A 182 Gr. F 347	0.080 Max	2.00 Max	0.045	0.030	1.00 Max	17.0-20.0	9.0-13.0	-	515	205	30	50	Cb%=(10xC)-1.10
A 182 Gr. F 347H	0.04-0.10	2.00 Max	0.045	0.030	1.00 Max	17.0-20.0	9.0-13.0	-	515	205	30	50	Cb%=(8xC)-1.10
CARBON STEEL													
A 105	0.035 Max	0.60-1.05	0.035	0.040	0.10-0.35	0.30 Max	0.40 Max	0.12 Max	485	250	22	30	187
LOW TEMPERATURE CARBON STEEL													
A 350 Gr. LF 1	0.30 Max	0.60-1.35	0.035	0.040	0.15-0.30	0.30 Max	0.40 Max	0.12 Max	415-585	205	25	38	197
A 350 Gr. LF 2	0.30 Max	0.60-1.35	0.035	0.040	0.15-0.30	0.30 Max	0.40 Max	0.12 Max	485-655	250	22	30	197
A 350 Gr. LF 3	0.20 Max	0.90 Max	0.035	0.040	0.20-0.35	0.30 Max	3.30-3.70	0.12 Max	485-655	260	22	35	197
ALLOY STEEL													
A 182 Gr. F 1	0.28 max	0.60-0.90	0.045	0.045	0.15-0.35	-	-	0.44-0.65	485	275	20	30	143-192
A 182 Gr. F 2	0.05-0.21	0.30-0.80	0.040	0.040	0.10-0.60	0.50-0.81	-	0.44-0.65	485	275	20	30	143-192
A 182 Gr. F 5	0.15 max	0.30-0.60	0.030	0.030	0.50 Max	4.0-6.0	0.5 Max	0.44-0.65	485	275	20	35	143-217
A 182 Gr. F 9	0.15 max	0.30-0.60	0.030	0.030	0.50-1.00	8.0-10.0	-	0.90-1.10	585	380	20	40	179-217
A 182 Gr. F 11 CL1	0.05-0.15	0.30-0.60	0.030	0.030	0.50-1.00	1.0-1.50	-	0.44-0.65	415	205	20	45	121-174
A 182 Gr. F 11 CL2	0.10-0.20	0.30-0.80	0.040	0.040	0.50-1.0	1.0-1.50	-	0.40-0.65	485	275	20	30	143-207
A 182 Gr. F 11 CL3	0.10-0.20	0.30-0.80	0.040	0.040	0.50-1.0	1.0-1.50	-	0.44-0.65	515	310	20	30	156-207
A 182 Gr. F 12 CL1	0.05-0.15	0.30-0.60	0.045	0.045	0.50 Max	0.80-1.25	-	0.44-0.65	415	220	20	45	121-174
A 182 Gr. F 12 CL2	0.10-0.20	0.30-0.80	0.040	0.040	0.10-0.60	0.80-1.25	-	0.44-0.65	485	275	20	30	143-207
A 182 Gr. F 22 CL1	0.05-0.15	0.30-0.60	0.040	0.040	0.50 Max	2.0-2.5	-	0.87-1.13	415	205	20	35	170
A 182 Gr. F 22 CL3	0.05-0.15	0.30-0.60	0.040	0.040	0.50 Max	2.0-2.50	-	0.87-1.13	515	310	20	30	156-207
A 182 Gr. F 91	0.08-0.12	0.30-0.60	0.020	0.010	0.20-0.50	8.0-9.5	0.40 Max	0.85-1.05	585	415	20	40	248



FLANGES TOLERANCE

ANSI



THREADED..		
Outside Diameter (O)	When O.D. is 24 or less	$\pm 1/16$ *
	When O.D. is over 24	$\pm 1/8$ *
Inside Diameter (B Slip-on & Lap Joint)	Threaded: Within limits on boring gauge	
	10 and smaller	+1/32, 0
	12 and larger	+1/16, 0
Diameter of Contact Face (R)	1/16 Raised Face	$\pm 1/32$
	1/4 Raised Face, Tongue and Groove, or male and Female	$\pm 1/64$
Diameter of Counterbore	Same as for Inside Diameter	
Outside Dia. of Hub (X)	12 and Smaller	+3/32* 1/16*
	Over 12	$\pm 1/8$
Drilling	Bolt Circle	$\pm 1/16$
	Bolt hole spacing	$\pm 1/32$
	Eccentricity of: Bolt Circle with respect to bore	1/32 Max*
	Eccentricity of: Facing with respect to bore	1/32 Max*
Overall Height (Y)	On all flanges 18 and smaller	+ 1/8 1/32
	On all flanges larger than 18	+ 3/16 1/16
Thickness (T)	18 and smaller	+ 1/8 0
	Over 18	+ 3/16 0
	Where allowance has been left on face for finish: All sizes	+ 1/8 1/16

WELDING NECK FLANGES		
Outside Diameter (O)	When O.D. is 24 or less	$\pm 1/16$ *
	When O.D. is over 24	$\pm 1/8$ *
Inside Diameter (O)	10 and smaller	$\pm 1/32$
	12 to 18	$\pm 1/16$
	Over 18	+ 1/8 1/16
Diameter of Contact Face (R)	1/16 Raised Face	$\pm 1/32$
	1/4 Raised Face, Tongue and Groove, or male and Female	$\pm 1/64$
Diameter of Hub at Point of Welding (A)	5 and smaller	+ 3/32 1/32
	6 and smaller	+ 5/32 1/32
Diameter of Hub at Base (X)	X 24 and under	$\pm 1/16$
	X over 24	$\pm 1/8$
Drilling	Bolt Circle	$\pm 1/16$
	Bolt hole spacing	$\pm 1/32$
	Eccentricity of: Bolt Circle with respect to bore	1/32 Max *
	Eccentricity of: Facing with respect to bore	1/32 Max *
Width of Land	All sizes	$\pm 1/32$ *
Angle of Hub Bevel	All sizes	$\pm 2 1/2^\circ$ *
Overall Height (Y)	10 and smaller	$\pm 1/16$
	12 and larger	$\pm 1/8$
Thickness (T)	Over 18	+ 3/16 0
	Where allowance has been left on face for finish: All sizes	+ 1/8 * 1/16

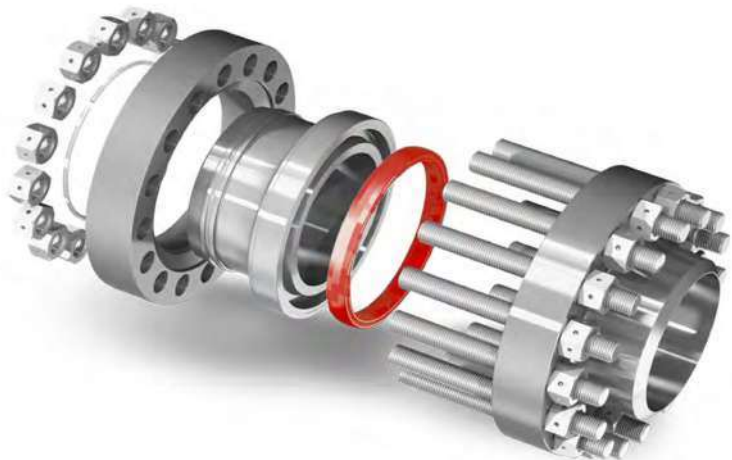
* This tolerance not covered by ANSI B16.5. Orifice Flanges are not covered by this standard, but all ANSI flange tolerances, where applicable, apply to all Coastal Orifice Flange dimensions except the bore.

Quality Assurance

Our technical research facilities & our product development teams are ready to meet the needs of most demanding customers.

Testing facilities available from Laboratory like:

- CHEMICALS
- MECHANICAL & PHYSICAL
- MICRO & MACRO
- IGC (Pr. A, B, C, D, E) NACE
- ULTRA
- HARDNESS
- IMPACT
- HYDROSTATIC
- FLATTENING
- HEAT TREATMENT
- BEND TEST
- X'RAY
- SPECTRO
- OTHER MISCELLANEOUS TEST

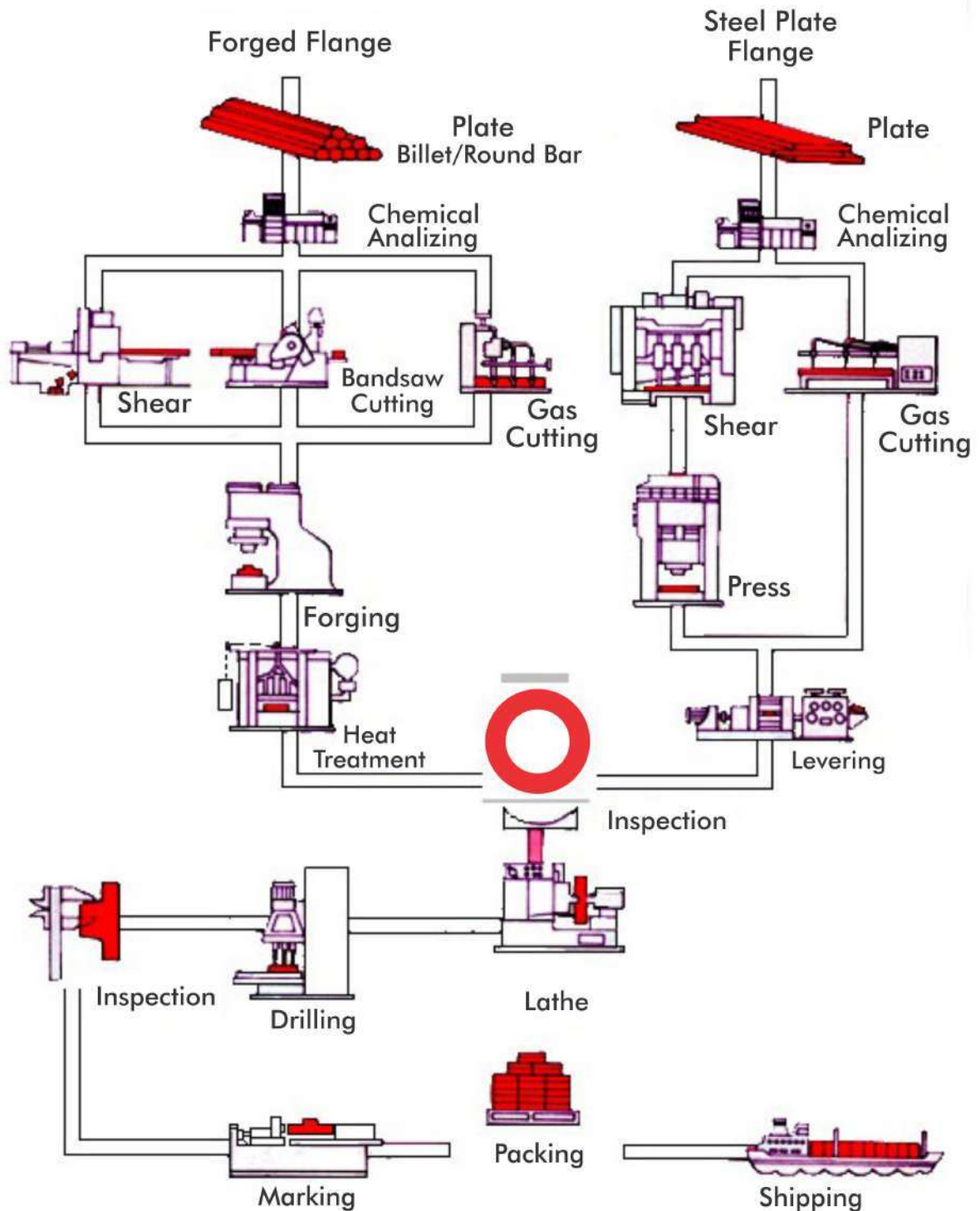




SHREE ARBUDA STEEL

Mobile : +91 8108105140 / 8850182889

Flanges Manufacturing Flow Chart





SHREE ARBUDA STEEL

Mobile : +91 8108105140 / 8850182889



BUTTWELD FITTINGS.....



Stainless Steel	: ASTM A403, WP304,304L,304H,316, 316L,317,317L,321,310,347,904L
Duplex & Super Duplex	: UNS S31803, UNS S32750, UNS S32760,
Hastelloy Alloy	: ASTM B366 Hastelloy B2, Hastelloy C276, Hastelloy C22
Incoloy Alloys	: ASTM B366 Alloy 20, Alloy 800H/800HT, Alloy 825, Alloy A286
Inconel Alloys	: ASTM B366 Alloy 600, Alloy 601, Alloy 625, Alloy 718, Alloy 725,
Monel Alloys	: ASTM B366 Monel 400, Monel K500.
Carbon Steel	: ASTM A234 WPB,A420 WPL3,A420 WPL6, MSS-SP-75 WPHY 42/46/52
Alloy Steel	: ASTM A234WP1,WP5,WP9,WP11,WP22
Size	: 1/4" NB TO 24" NB (seamless) 4" NB TO 72" NB (welded)
Wall Thickness	: Sch. 5s To Sch. XXS

TYPE OF BUTTWELD FITTINGS

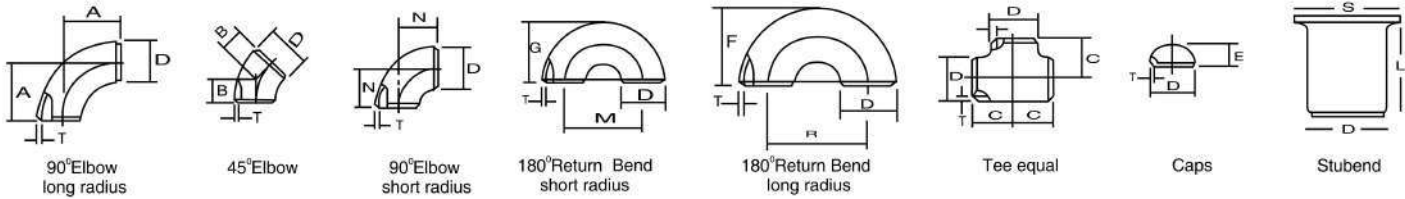
- ELBOW (1D/1.5D/3D/5D)
- 180° RETURN BEND / MITER BEND
- EQUAL TEE
- REDUCING TEE / CROSS TEE
- LONG STUBEND
- SHORT STUBEND
- REDUCER (CON./ECC.)
- END CAP / DISH END CAP



SHREE ARBUDA STEEL

Mobile : +91 8108105140 / 8850182889

Butt Welding Pipe Fittings Dimensional Standard ANSI B-16.9, B-16.28



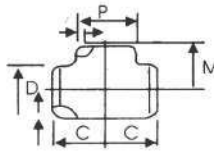
Nominal Pipe Size		Outside Diameter	Center to Face				Back to Face				Center to Center			Length 'L'	
Inch.	mm	D	A	B	C	N	E	F	G	R	M	S	MSS SP43	ANSI B 16.9	
1/2	15	21.3	38	16	25	—	25	48	—	76	—	34.9	50.8	76.2	
3/4	20	26.7	38	11	29	—	25	43	—	57	—	42.8	50.8	76.2	
1	25	33.4	38	22	38	25	38	56	41	76	51	50.8	50.8	101.6	
1 1/4	32	42.2	48	25	48	32	38	70	52	95	64	63.5	50.8	101.6	
1 1/2	40	48.3	57	29	57	38	38	83	62	114	76	73.0	50.8	101.6	
2	50	60.3	76	35	64	51	38	106	81	152	102	92.0	63.5	152.4	
2 1/2	65	73.0	95	44	76	64	38	132	100	191	127	104.8	63.5	152.4	
3	80	88.9	114	51	86	76	51	159	121	229	152	127.0	63.5	152.4	
3 1/2	90	101.6	133	57	95	89	64	184	140	267	178	139.7	76.2	152.4	
4	100	114.3	152	64	105	102	64	210	159	305	203	157.2	76.2	152.4	
5	125	141.3	190	79	124	127	76	262	197	381	254	185.7	76.2	203.2	
6	150	168.3	229	95	143	152	89	313	237	457	305	215.9	88.9	203.2	
8	200	219.1	305	127	178	203	102	414	313	610	406	270.0	101.6	203.2	
10	250	273.1	381	159	216	254	127	518	391	762	508	324.0	127.0	254.0	
12	300	323.9	457	190	254	305	152	619	467	914	610	381.0	152.4	254.0	
14	350	355.6	533	222	279	356	165	711	533	1067	711	412.8	152.4	305.0	
16	400	406.4	610	254	305	406	178	813	610	1219	813	470.0	152.4	305.0	
18	450	457.2	686	286	343	457	203	914	686	1372	914	533.4	152.4	305.0	
20	500	508.0	762	318	381	508	229	1016	762	1524	1016	584.2	152.4	305.0	
22	550	559.0	838	343	419	559	254	1118	838	1676	1118	614.4	152.4	305.0	
24	600	610.0	914	381	432	610	267	1219	914	1829	1219	692.2	152.4	305.0	
26	650	660.0	991	406	495	660	267	—	—	—	—	—	—	—	
28	700	711.0	1067	438	521	711	267	—	—	—	—	—	—	—	
30	750	762.0	1143	470	559	762	267	—	—	—	—	—	—	—	
32	800	813.0	1219	502	597	813	267	—	—	—	—	—	—	—	
34	850	864.0	1295	533	635	864	267	—	—	—	—	—	—	—	
36	900	914.0	1372	565	673	914	267								
38	950	965.0	1448	600	711	965	305								
40	1000	1016.0	1524	632	749	1016	305								
42	1050	1067.0	1600	660	762	1067	305								
44	1100	1118.0	1676	695	813	1118	343								
46	1150	1168.0	1753	727	851	1168	343								
48	1200	1219.0	1829	759	889	1219	343								



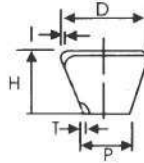
SHREE ARBUDA STEEL

Mobile : +91 8108105140 / 8850182889

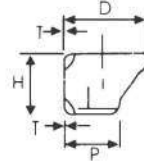
DIMENSION OF BUTT-WELDING FITING ANSI B-16.9 / B-16.28



REDUCING TEES



CONCENTRIC REDUCERS



ECCENTRIC REDUCERS

Nominal Pipe Size		Outside Diameter		Center to End		Length
Inch.	mm	D	P	C	M	H
1/2 x 3/8	15 x 10	21.3	17.1	25	25	-
1/2 x 1/4	15 x 8	21.3	13.7	25	25	-
3/4 x 1/2	20 x 15	26.7	21.3	29	29	38
3/4 x 3/8	20 x 10	26.7	17.1	29	29	38
1 x 3/4	25 x 20	33.4	26.7	38	38	51
1 x 1/2	25 x 15	33.4	21.3	38	38	51
1 1/4 x 1	32 x 25	42.2	33.4	48	48	51
1 1/4 x 3/4	32 x 20	42.2	26.7	48	48	51
1 1/4 x 1/2	32 x 15	42.2	21.3	48	48	51
1 1/2 x 1 1/2	40 x 32	48.3	42.2	57	57	64
1 1/2 x 1	40 x 25	48.3	33.4	57	57	64
1 1/2 x 3/4	40 x 20	48.3	26.7	57	57	64
1 1/2 x 1/2	40 x 15	48.3	21.3	57	57	64
2 x 1 1/2	50 x 40	60.3	48.2	64	60	76
2 x 1 1/4	50 x 32	60.3	42.2	64	57	76
2 x 1	50 x 25	60.3	33.4	64	51	76
2 x 3/4	50 x 20	60.3	26.7	64	44	76
2 1/2 x 2	65 x 50	73.0	60.3	76	70	89
2 1/2 x 1 1/2	65 x 40	73.0	48.3	76	67	89
2 1/2 x 1 1/4	65 x 32	73.0	42.2	76	64	89
2 1/2 x 1	65 x 25	73.0	33.4	76	57	89
3 x 2 1/2	80 x 65	88.9	73.0	86	83	89
3 x 2	80 x 50	88.9	60.3	86	76	89
3 x 1 1/2	80 x 40	88.9	48.3	86	73	89
3 x 1 1/4	80 x 32	88.9	42.2	86	70	89
3 1/2 x 3	90 x 80	101.6	88.9	95	92	102
3 1/2 x 2 1/2	90 x 65	101.6	73.0	95	89	102
3 1/2 x 2	90 x 50	101.6	60.3	95	83	102
3 1/2 x 1 1/2	90 x 40	101.6	48.3	95	79	102
3 1/2 x 1 1/4	90 x 32	101.6	42.2	-	-	102
4 x 3 1/2	100 x 90	114.3	101.6	105	102	102
4 x 3	100 x 80	114.3	88.9	105	98	102
4 x 2 1/2	100 x 65	114.3	73.0	105	95	102
4 x 2	100 x 50	114.3	60.3	105	89	102
4 x 1 1/2	100 x 40	114.3	48.3	105	86	102
5 x 4	125 x 100	141.3	114.3	124	117	127
5 x 3 1/2	125 x 90	141.3	101.6	124	114	127
5 x 3	125 x 80	141.3	88.9	124	111	127
5 x 2 1/2	125 x 65	141.3	73.0	124	108	127
5 x 2	125 x 50	141.3	60.3	124	105	127
6 x 5	150 x 125	168.3	141.3	143	137	140
6 x 4	150 x 100	168.3	114.3	143	130	140
6 x 3 1/2	150 x 90	168.3	101.6	143	127	140
6 x 3	150 x 80	168.3	88.9	143	124	140
6 x 2 1/2	150 x 65	168.3	73.0	143	121	140

Nominal Pipe Size		Outside Diameter		Center to End		Length
Inch.	mm	D	P	C	M	H
8 x 6	200x150	219.1	168.3	178	168	152
8 x 5	200 x 125	219.1	141.3	178	162	152
8 x 4	200 x 100	219.1	114.3	178	156	152
8 x 3 1/2	200 x 90	219.1	101.6	178	152	152
10 x 8	250 x 200	273.1	219.1	216	203	178
10 x 6	250 x 150	273.1	168.1	216	194	178
10 x 5	250 x 125	273.1	141.3	216	191	178
10 x 4	250 x 100	273.1	114.3	216	184	178
12 x 10	300 x 250	323.9	273.1	254	241	203
12 x 8	300 x 200	323.9	219.1	254	229	203
12 x 6	300 x 150	323.9	168.3	254	219	203
12 x 5	300 x 125	323.9	141.3	254	216	203
14 x 12	350 x 300	355.6	323.9	279	270	330
14 x 10	350 x 250	355.6	273.1	279	257	330
14 x 8	350 x 200	355.6	219.1	279	248	330
14 x 6	350 x 150	355.6	168.3	279	238	330
16 x 14	400 x 350	406.4	355.6	305	305	356
16 x 12	400 x 300	406.4	323.9	305	295	356
16 x 10	400 x 250	406.4	273.1	305	283	356
16 x 8	400 x 200	406.4	219.1	305	273	356
16 x 6	400 x 150	406.4	168.3	305	264	356
18 x 16	450 x 400	457.0	406.4	343	330	381
18 x 14	450 x 350	457.0	355.6	343	330	381
18 x 12	450 x 300	457.0	323.9	343	321	381
18 x 10	450 x 250	457.0	273.1	343	308	381
18 x 8	450 x 200	457.0	219.1	343	298	381
20 x 18	500 x 450	508.0	457.0	381	368	508
20 x 16	500 x 400	508.0	406.4	381	356	508
20 x 14	500 x 350	508.0	355.6	381	356	508
20 x 12	500 x 300	508.0	323.9	381	346	508
20 x 10	500 x 250	508.0	273.1	381	333	508
20 x 8	500 x 200	508.0	219.1	381	324	508
22 x 20	550 x 500	559.0	508.0	419	406	508
22 x 18	550 x 450	559.0	457.0	419	394	508
22 x 16	550 x 400	559.0	406.4	419	381	508
22 x 14	550 x 350	559.0	355.6	419	381	508
22 x 12	550 x 300	559.0	323.9	419	371	508
24 x 10	550 x 250	559.0	273.1	419	359	508
24 x 22	600 x 550	610.0	559.0	432	432	508
24 x 20	600 x 500	610.0	508.0	432	432	508
24 x 18	600 x 450	610.0	457.0	432	419	508
24 x 16	600 x 400	610.0	406.4	432	406	508
24 x 14	600 x 350	610.0	355.6	432	406	508
24 x 12	600 x 300	610.0	323.9	432	397	508
24 x 10	600 x 250	610.0	273.1	432	384	508



SHREE ARBUDA STEEL

Mobile : +91 8108105140 / 8850182889

BUTT-WELD FITTINGS ASTM

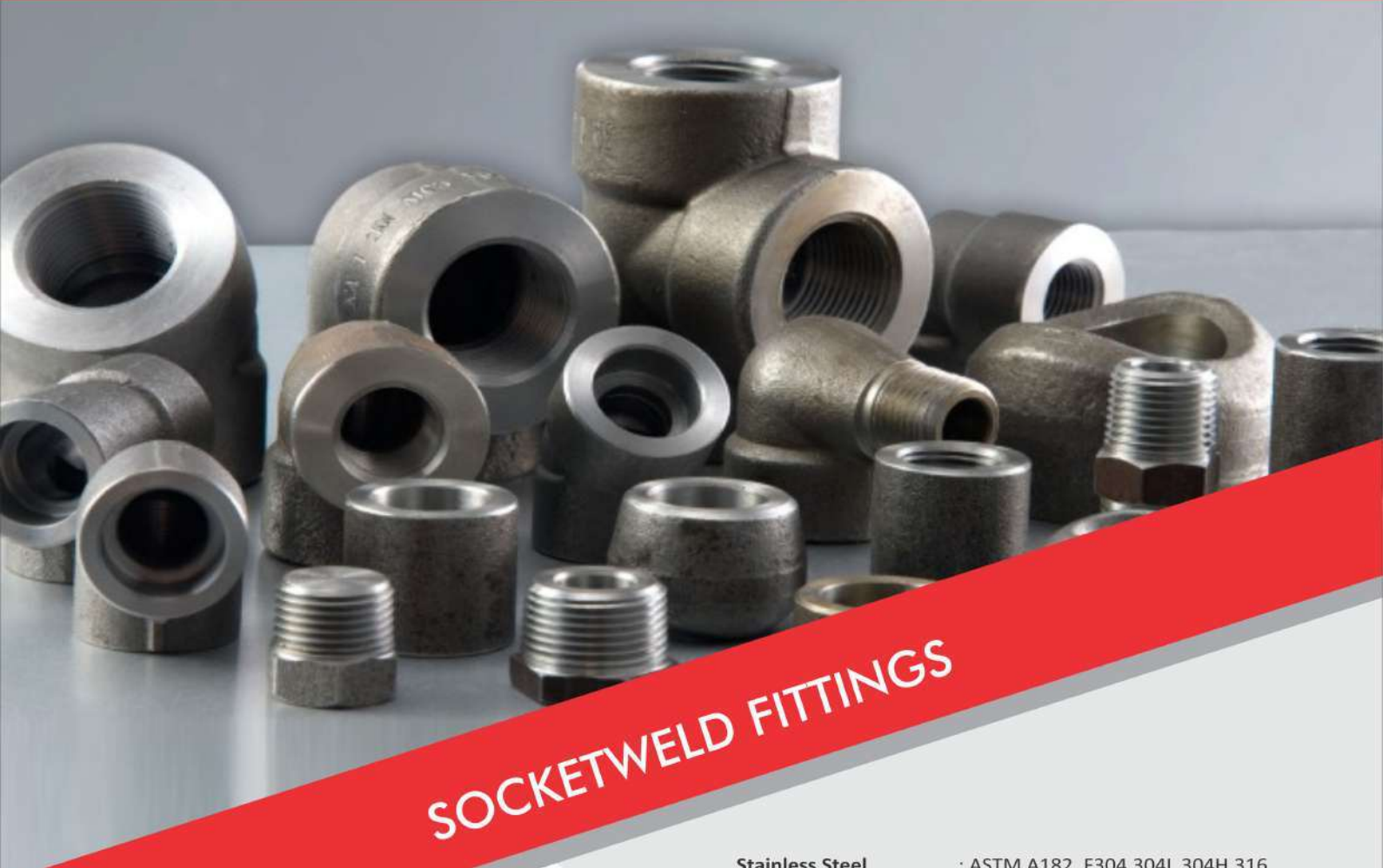
MATERIALS SPECIFICATION FOR SEAMLESS BUTT-WELDING PIPE-FITTINGS

SPECIFICATION (ASTM-2002)	CHEMICAL PROPERTIES						MECHANICAL PROPERTIES						OTHERS	
	C%	Mn%	P% (Max)	S% (Max)	Si%	Cr%	Mo%	Ni%	U.T.S. (Min) Mpa	Y.S. (Min) Mpa	E.LONG (Min) L	Hardness (Max) BHN		
STAINLESS STEEL														
A 403 Gr. WP 304	0.080 Max	2.00 Max	0.045	0.030	1.00 Max	18.0-20.0	-	8.0-11.0	515	205	28	20	-	
A 403 Gr. WP 304L	0.030 Max	2.00 Max	0.045	0.030	1.00 Max	18.0-20.0	-	8.0-12.0	485	170	28	20	-	
A 403 Gr. WP 304H	0.04-0.10	2.00 Max	0.045	0.030	1.00 Max	18.0-20.0	-	8.0-11.0	515	205	28	20	-	
A 403 Gr. WP 304LN	0.030 Max	2.00 Max	0.045	0.030	1.00 Max	18.0-20.0	-	8.0-11.0	515	205	28	20	N%=0.10-0.16	
A 403 Gr. WP 309	0.20 Max	2.00 Max	0.045	0.030	1.00 Max	22.0-24.0	-	12.0-15.0	515	205	28	20	-	
A 403 Gr. WP 310S	0.080 Max	2.00 Max	0.045	0.030	1.00 Max	24.0-26.0	-	19.0-22.0	515	205	28	20	-	
A 403 Gr. WP 316	0.080 Max	2.00 Max	0.045	0.030	1.00 Max	16.0-18.0	2.0-3.0	10.0-14.0	515	205	28	20	-	
A 403 Gr. WP 316L	0.030 Max	2.00 Max	0.045	0.030	1.00 Max	16.0-18.0	2.0-3.0	10.0-14.0	485	170	28	20	-	
A 403 Gr. WP 316H	0.04-0.10	2.00 Max	0.045	0.030	1.00 Max	16.0-18.0	2.0-3.0	10.0-14.0	515	205	28	20	-	
A 403 Gr. WP 316LN	0.030 Max	2.00 Max	0.045	0.030	1.00 Max	16.0-18.0	2.0-3.0	10.0-13.0	515	205	28	20	N%=0.10-0.16	
A 403 Gr. WP 317	0.080 Max	2.00 Max	0.045	0.030	1.00 Max	18.0-20.0	3.0-4.0	11.0-15.0	515	205	28	20	-	
A 403 Gr. WP 317L	0.030 Max	2.00 Max	0.045	0.030	1.00 Max	18.0-20.0	3.0-4.0	11.0-15.0	515	205	28	20	-	
A 403 Gr. WP 321	0.080 Max	2.00 Max	0.045	0.030	1.00 Max	17.0-19.0	-	9.0-12.0	515	205	28	20	Ti%=(5XC)-0.70	
A 403 Gr. WP 321H	0.04-0.10	2.00 Max	0.045	0.030	1.00 Max	17.0-19.0	-	9.0-12.0	515	205	28	20	Ti%=(4XC)-0.70	
A 403 Gr. WP 347	0.080 Max	2.00 Max	0.045	0.030	1.00 Max	17.0-19.0	-	9.0-12.0	515	205	28	20	Cb%=(10XC)-1.10	
A 403 Gr. WP 347H	0.04-0.10	2.00 Max	0.045	0.030	1.00 Max	17.0-19.0	-	9.0-12.0	515	205	28	20	Cb%=(8XC)-1.10	
CARBON STEEL														
A 234 Gr. WPB	0.30 Max	0.29-1.06	0.050	0.058	0.10 Min	0.40 Max	0.15 Max	0.40 Max	415-655	240	30	20	197	Cu%≤0.40 Max, Ni%≤0.08 Max, Nb%≤0.02 Max
A 234 Gr. WPC	0.35 Max	0.29-1.06	0.050	0.058	0.10 Min	0.40 Max	0.15 Max	0.40 Max	485-655	275	30	20	197	Cu%≤0.40 Max, Ni%≤0.08 Max, Nb%≤0.02 Max
LOW TEMPERATURE CARBON STEEL														
A 420 Gr. WPL6	0.30 Max	0.50-1.35	0.035	0.040	0.15-0.40	0.30 Max	0.12 Max	0.40 Max	415-655	240	30	16.5	197	Cu%≤0.40 Max, Ni%≤0.08 Max, Nb%≤0.02 Max Impact Test 45°C, J=17.3-13.6
A 420 Gr. WPL 3	0.20 Max	0.31-0.64	0.050	0.050	0.13-0.37	-	-	3.20-3.80	450-620	240	30	20	197	Impact Test=45°C, J=17.3-13.6
ALLOY STEEL														
A 234 Gr. WP 1	0.28 Max	0.30-0.90	0.045	0.045	0.10-0.50	-	0.44-0.65	-	380-550	205	30	20	197	
A 234 Gr. WP 5	0.15 Max	0.30-0.60	0.040	0.030	0.50 Max	4.0-6.0	0.44-0.65	-	415-585	205	30	20	217	
A 234 Gr. WP 9	0.15 Max	0.30-0.60	0.030	0.030	1.00 Max	8.0-10.0	0.90-1.10	-	415-585	205	30	20	217	
A 234 Gr. WP 11 CL1	0.05-0.15	0.30-0.60	0.030	0.030	0.50-1.0	1.0-1.5	0.44-0.65	-	415-585	205	30	20	197	
A 234 Gr. WP 11 CL2	0.05-0.20	0.30-0.80	0.040	0.040	0.50-1.0	1.0-1.5	0.44-0.65	-	485-655	275	30	20	197	
A 234 Gr. WP 11 CL3	0.05-0.20	0.30-0.80	0.040	0.040	0.50-1.0	1.0-1.5	0.44-0.65	-	520-690	310	30	20	197	
A 234 Gr. WP 12 CL1	0.05-0.20	0.30-0.80	0.045	0.045	0.60 Max	0.80-1.25	0.44-0.65	-	415-585	220	30	20	197	
A 234 Gr. WP 12 CL2	0.05-0.20	0.30-0.80	0.045	0.045	0.60 Max	0.80-1.25	0.44-0.65	-	485-655	275	30	20	197	
A 234 Gr. WP 22 CL1	0.05-0.15	0.30-0.60	0.040	0.040	0.50 Max	1.90-2.60	0.87-1.13	-	415-585	205	30	20	197	
A 234 Gr. WP 22 CL3	0.05-0.15	0.30-0.60	0.040	0.040	0.50 Max	1.90-2.60	0.87-1.13	-	520-690	310	30	20	197	
A 234 Gr. WP 91	0.08-0.12	0.30-0.60	0.020	0.010	0.20-0.50	8.0-9.5	0.85-1.05	0.40 Max	585-760	415	20	-	248	Ni%≤0.16-0.25, Nb%≤0.06-0.10, W%≤0.03-0.07, Al%≤0.04 Max



SHREE ARBUDA STEEL

Mobile : +91 8108105140 / 8850182889



SOCKETWELD FITTINGS

Stainless Steel	: ASTM A182, F304,304L,304H,316, 316L,317,317L,321,310,347,904L
High Nickel	: Monel, Nickel, Inconel, Hastelloy
Carbon Steel	: ASTM A105,A694 F42,A350 LF2
Alloy Steel	: ASTM A182 F1,F5,F9,F11,F22,F91
Size	: 1/4" NB TO 4" NB
Class	: 3000#, 6000#, 9000#

- Stainless Steel & Duplex Steel
- Nickel Alloy & Copper Nickel Alloy
- Carbon Steel & Alloy Steel

Types : Elbow, Tee, Union, Cross, Coup Bushing, Plug, Swage Nipple, Welding Boss, Hexagon Nipple, Barrel Nipple, Welding Nipple, Parraler Nipple, Street Elbow, Hexagon Nut, Hose Nipple, Bend, Adapter, Insert, Weldolet, Elbowlet, Sockolet, Thredolet, Nipolet, Letrolet,etc.

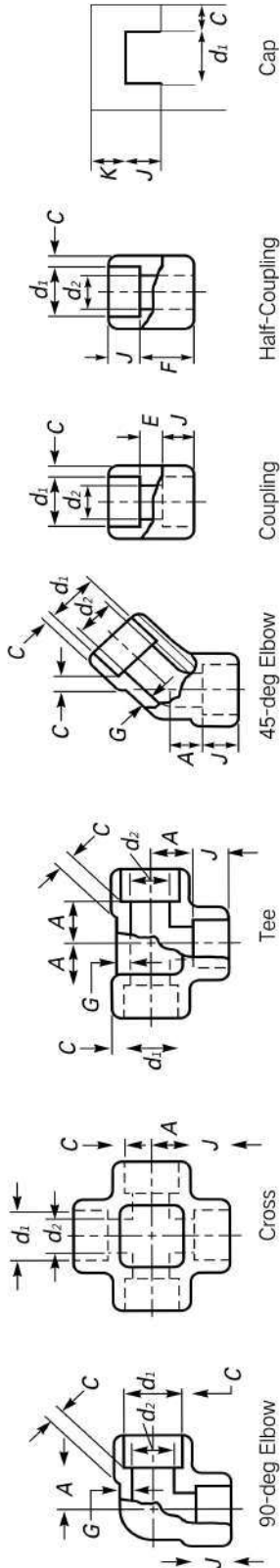




SHREE ARBUDA STEEL

Mobile : +91 8108105140 / 8850182889

DIMENSIONS OF SOCKET-WELDING FITTINGS ANSI B 16.11



Nom. Pipe Size	Socket Bore Diameter	Socket Wall Thickness, C		Body Wall, G		Depth of Socket Min	Center to Bottom of Socket		Laying Lengths		End Wall Thickness Class Designation Min	
		3000 Min.	6000 Min.	3000 Min.	6000 Min.		90° Elbows, Tees, and Crosses Class Designation A	45° Elbows Class Designation A	Full Couplings	Half Couplings	K	Min
DN	NPS	d1				J				E	F	
6	1/8	10.8-11.2	3.18	3.43	2.41	9.5	11	8	8	6.5	16	4.8
8	1/4	14.2-14.6	3.3	4.01	3.02	9.5	11	8	8	6.5	16	4.8
10	3/8	17.6-18	3.5	4.37	3.2	9.5	13.5	8	11	6.5	17.5	4.8
15	1/2	21.8-22.2	4.09	5.18	3.73	9.5	15.5	11	12.5	9.5	22.5	6.4
20	3/4	27.2-27.6	4.27	6.04	3.91	12.5	19	13	14	9.5	24	6.4
25	1	33.9-34.3	4.98	6.93	4.55	12.5	22.5	14	17.5	12.5	28.5	9.6
32	1 1/4	42.7-43.1	5.28	6.93	4.85	12.5	27	17.5	20.5	12.5	30	9.6
40	1 1/2	48.8-49.2	5.54	7.8	5.08	12.5	32	20.5	25.5	12.5	32	11.2
50	2	61.2-61.7	6.04	9.5	5.54	16	38	25.5	28.5	19	41	12.7
65	2 1/2	73.9-74.4	7.67	-	7.01	16	41	28.5	-	19	43	15.7
80	3	89.8-90.3	8.3	-	7.62	16	57	32	-	19	44.5	19.0
100	4	115.2-115.7	9.35	-	8.56	19	66.5	41	-	19	48	22.4

(1) All Dimensions Are in Millimeters

(2) Upper and lower values for each size are the respective maximum and minimum dimensions.

(3) Average of socket wall thickness around periphery shall be no less than listed values. The minimum values are permitted in localized areas.

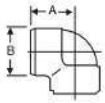


SHREE ARBUDA STEEL

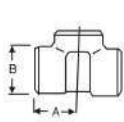
Mobile : +91 8108105140 / 8850182889

DIMENSION IN MM OF FORGED SCREWED FITTINGS TO ANSI B-16.11 THREADED TO ASA B 2.1

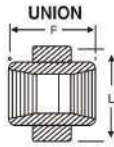
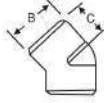
90° ELBOWS



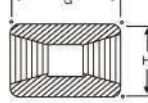
TEE



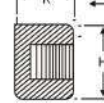
45° ELBOW



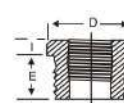
COUPLING



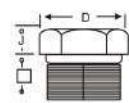
PIPE CAP



BUSHING



HEX HEAD PLUG

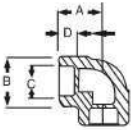


HALF COUPLING = G/2

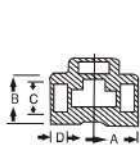
NOM BORE	PIPE O.D.	3000 L.B.S.						COMMON FACTORS						6000 L.B.S.					
		A	B	C	G	H	K	D	E	F	I	J	L	A	B	C	G	H	K
1/8"	10.3	21	22	17	32	16	19	11	10	40	-	6	-	25	25	19	32	22	-
1/4"	13.7	25	25	19	35	19	25	16	11	43	3	6	32	29	33	22	35	25	27
3/8"	17.2	29	33	22	38	22	25	17.5	13	48	4	8	38	33	38	25	38	32	27
1/2"	21.3	33	38	25	48	29	32	22	15	51	5	8	46	38	46	29	48	38	33
3/4"	26.7	38	46	29	51	35	37	27	16	57	6	10	51	44	56	33	51	44	38
1"	33.4	44	56	33	60	44	41	35	19	64	6	10	60	51	62	35	60	57	43
1 1/4"	42.2	51	62	35	67	57	44	44.5	21	70	7	14	72	60	75	43	67	64	46
1 1/2"	48.3	60	75	43	79	64	44	51	21	79	8	16	80	64	84	44	79	76	48
2"	60.3	64	84	45	86	76	48	63.5	22	88	9	17	94	83	102	52	86	92	51
2 1/2"	73.02	83	102	52	92	92	60	76	27	118	10	21	122	95	121	64	92	108	64
3"	89.0	95	121	64	108	108	65	89	29	121	10	25	140	106	146	79	108	127	68
4"	114.5	114	152	79	121	140	68	117.5	32	150	13	25	180	114	152	79	121	159	75

SOCKET WELD FITTING TO ANSI B-16.11

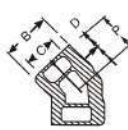
90° ELBOWS



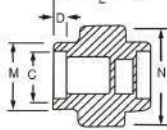
TEE



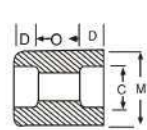
45° ELBOW



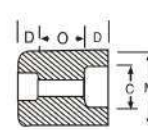
UNION



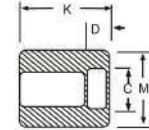
COUPLING



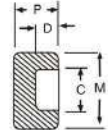
REDUCER



HALF COUPLING



CAP



NOM BORE	PIPE O.D.	3000 L.B.S.									COMMON FACTORS				6000 L.B.S.				
		A	B	K	J	L	M	N	P	Q	Cmin	Dmin	Omin	Omax	A	B	M	K	N
1/8"	10.3	22	18.5	26	16	40	17.3	32	17.5	10	10.7	10	5	8	22	22	20	25	46
1/4"	13.7	22	22	26	18	43	21.2	32	17.5	10	14.1	10	5	8	27	25	24	25	51
3/8"	17.2	25	25	26	19	48	25.4	36	19	10	17.6	10	3	9	27	28	28	26	60
1/2"	21.3	27	32	30	21	51	31	43	22	10	21.7	10	6	13	31	34	34	31	72
3/4"	26.7	34	38	36	24	57	37	50	25	13	27	13	6	13	37	42	41	35	80
1"	33.4	37	46	40	25	64	45.2	60	27	13	33.8	13	9	17	42	50	50	40	94
1 1/4"	42.2	42	56	40	29	70	55	70	30	13	42.6	13	9	17	47	59	58	41	100
1 1/2"	48.3	47	62	40	30	79	61.4	78	32	13	48.7	13	9	17	53	67	55	43	122
2"	60.3	56	75	52	37	89	75	95	38	13	61.2	16	15	23	59	84	83	55	
2 1/2"	73.02	60	92	52	48	114	91.3	125	38	16	73.8	16	14	24		102		56	
3"	89.00	76	110	52	51	127	108.8	140	44	16	89.8	16	14	24		121		58	
4"	114.50	88	137	58		150	136.9		48	19	115.5	19	14	24		152		64	

DIMENSIONS AND OTHERS SPECIFICATIONS AS PER CUSTOMERS REQUIREMENTS ARE AVAILABLE ON REQUEST



SHREE ARBUDA STEEL

Mobile : +91 8108105140 / 8850182889



SPECTACLE FLANGES

Stainless Steel : 304, 304L, 304H, 316, 316L, 317, 317L

High Nickel Alloy :

Carbon Steel : A105, A350 Lf2

Alloy Steel : A182 F1, F5, F9, F11, F22, F91

Size : 1/2" (15NB) to 48" (1200NB)

Standard : ASME B16.48

Class : 150#, 300#, 600#, 900#, 1500#, 2500#

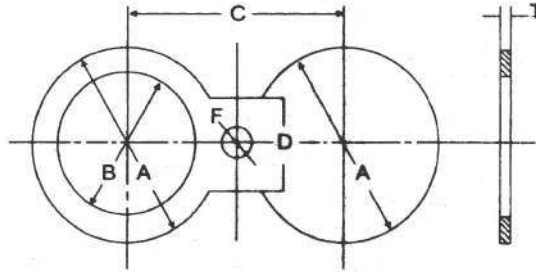




SHREE ARBUDA STEEL

Mobile : +91 8108105140 / 8850182889

SPECTACE FLG & FF, SPACER & BLANKS SPECTACLE FLANGES 150 CLASS, 300 CLASS, 600 CLASS, 900 CLASS



CLASS 150					
NPS	Inside Diameter B	Outside Diameter O	Centerline Dimension A	Thickness t	Web Width W
1/2	16	44	60	3	38
3/4	21	54	70	3	38
1	27	64	79	3	38
1 1/4	42	73	89	6	38
1 1/2	48	83	99	6	38
2	60	102	121	6	51
2 1/2	73	121	140	6	51
3	89	133	152	6	64
3 1/2	102	159	178	10	64
4	114	171	190	10	64
5	141	197	216	10	76
6	168	219	241	13	76
8	219	276	298	13	76
10	273	337	362	16	102
12	324	406	432	19	102
14	356	448	476	19	108
16	406	511	540	22	108
18	457	546	578	25	114
20	508	603	635	28	121
24	610	714	749	32	140

CLASS 300					
NPS	Inside Diameter B	Outside Diameter O	Centerline Dimension A	Thickness t	Web Width W
1/2	16	51	60	6	38
3/4	21	64	70	6	38
1	27	70	79	6	38
1 1/4	42	79	89	6	38
1 1/2	48	92	99	6	51
2	60	108	121	10	51
2 1/2	73	127	140	10	64
3	89	146	152	10	64
3 1/2	102	162	178	13	64
4	114	178	190	13	64
5	141	213	216	16	76
6	168	248	241	16	76
8	219	305	298	22	89
10	273	359	362	25	102
12	324	419	432	28	102
14	356	483	476	32	121
16	406	537	540	38	124
18	457	594	578	41	114
20	508	651	635	44	121
24	610	772	749	51	140

CLASS 600					
NPS	Inside Diameter B	Outside Diameter O	Centerline Dimension A	Thickness t	Web Width W
1/2	16	51	67	6	38
3/4	21	64	83	6	38
1	27	70	89	10	57
1 1/4	37	79	99	10	57
1 1/2	43	92	114	10	67
2	55	108	127	10	57
2 1/2	67	127	149	13	67
3	83	146	168	13	67
3 1/2	96	159	184	16	76
4	108	191	216	16	76
5	135	238	267	19	86
6	162	264	292	22	86
8	212	318	349	28	95
10	265	397	432	38	105
12	315	454	489	41	105
14	346	489	527	44	114
16	397	562	603	51	124
18	448	610	654	54	133
20	497	679	724	64	133
24	597	787	838	73	152

CLASS 900					
NPS	Inside Diameter B	Outside Diameter O	Centerline Dimension A	Thickness t	Web Width W
1/2	16	60	83	6	38
3/4	21	67	89	6	41
1	27	76	102	6	57
1 1/4	37	86	111	10	57
1 1/2	43	95	124	10	67
2	55	140	165	13	57
2 1/2	67	162	190	13	67
3	83	165	190	16	67
4	108	203	235	19	76
5	135	244	279	22	86
6	162	286	318	25	86
8	212	356	394	35	95
10	265	432	470	41	105
12	315	495	533	48	105
14	346	518	559	54	114
16	397	572	616	60	124
18	448	635	686	67	133
20	497	695	749	73	133
24	597	835	902	89	152

Notes:-

- (1) Thickness (dimension) includes a corrosion allowed allowance of 0.05 inch (1.3 millimeters) for material groups 1.1, 1.7, 1.9, 1, 10, and 1.12, Corrosion allowance is 0.00 inch for material groups 2.1, 2.2, 2.4 and 2.5
- (2) Hole size (where required due to bolt spacing) shall be the same as the flange bolt hole.

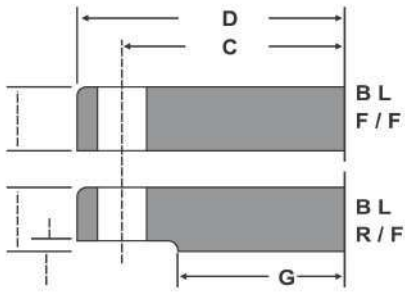
- (3) The thickness of the web (or tie bar) dimension Wt, shall be 0.25 inch (6.4 millimeter) minimum, except when r is less than 0.25 inch Wt shall equal



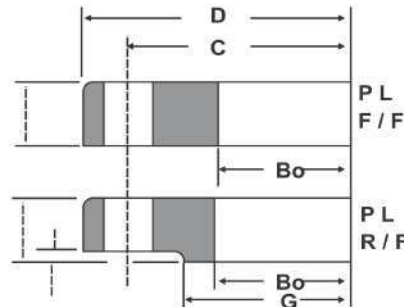
SHREE ARBUDA STEEL

Mobile : +91 8108105140 / 8850182889

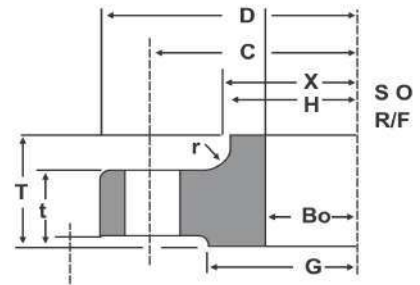
JIS Flanges 5 Kg/cm²



Blind



Plate



Slip-On

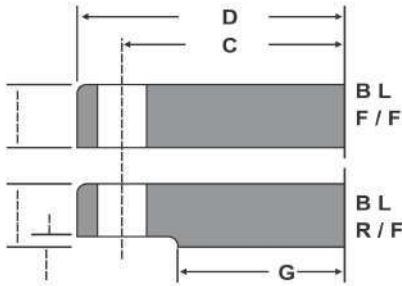
Pipe		Pipe	Bo	D		t	T	G	f	r	H	X	C	Holes	Bolt Dia.
inch	mm														
3/8	10	17.3	17.8	75	9	-		42	1	-	-	-	55	4	12
1/2	15	21.7	22.2	80	9	-		48	1	-	-	-	60	4	12
3/4	20	27.2	27.7	85	10	-		52	1	-	-	-	65	4	12
1	25	34.0	34.5	95	10	-		62	1	-	-	-	75	4	12
1-1/4	32	42.7	43.2	115	12	-		72	2	-	-	-	90	4	15
1-1/2	40	48.6	49.1	120	12	-		78	2	-	-	-	95	4	15
2	50	60.5	61.1	130	14	-		88	2	-	-	-	105	4	15
2-1/2	65	76.3	77.1	155	14	-		112	2	-	-	-	130	4	15
3	80	89.1	90.0	180	14	-		125	2	-	-	-	145	4	19
3-1/2	90	101.6	102.6	190	14	-		135	2	-	-	-	155	4	19
4	100	114.3	115.4	200	16	-		145	2	-	-	-	165	8	19
5	125	139.8	141.2	235	16	-		180	2	-	-	+2.0	200	8	19
6	150	165.2	166.6	265	18	-		210	2	-	-	-0	230	8	19
7	175	190.7	192.1	300	18	-	±1.0	235	2	-	-	-	260	8	23
8	200	216.3	218.0	320	20	-		255	2	-	-	-	280	8	23
9	225	241.8	243.7	345	20	-		280	2	-	-	-	305	12	23
10	250	267.4	269.5	385	22	-		320	2	5	286	290	345	12	23
12	300	318.5	321.0	430	22	-		365	3	5	338	342	390	12	23
14	350	355.6	358.1	480	24	-		405	3	5	378	382	435	12	25
16	400	406.4	409.0	540	24	-		465	3	5	432	436	495	16	25
18	450	457.2	460.0	605	24	-		525	3	5	495	500	555	16	25
20	500	508.0	511.0	655	24	-		575	3	5	546	552	605	20	25
22	550	558.8	562.0	720	26	-		630	3	5	597	603	665	20	27
24	600	609.6	613.0	770	26	-		680	3	5	648	654	715	20	27
26	650	660.4	664.0	825	26	-		735	3	5	702	708	770	24	27
28	700	711.2	715.0	875	26	-		785	3	5	751	+2.5	820	24	27
30	750	762.0	766.0	945	28	-		840	3	5	802	-0	880	24	33
32	800	812.8	817.0	995	28	-		890	3	5	854	862	930	24	33
34	850	863.6	868.0	1045	28	-		940	3	5	904	+3.0	980	24	33
36	900	914.4	919.0	1095	30	-		990	3	5	956	-0	1030	24	33
40	1000	1016.0	1021.0	1195	32	-		1090	3	5	1058	1066	1130	28	33
44	1100	1117.6	1123.0	1305	32	-		1200	3	-	-	-	1240	28	33
48	1200	1219.2	1224.0	1420	34	-		1305	3	-	-	+3.5	1350	32	33
54	1350	1371.6	1377.0	1575	34	-		1460	3	-	-	-0	1505	32	33
60	1500	1524.0	1529.0	1730	36	-		1615	3	-	-	-	1660	36	33



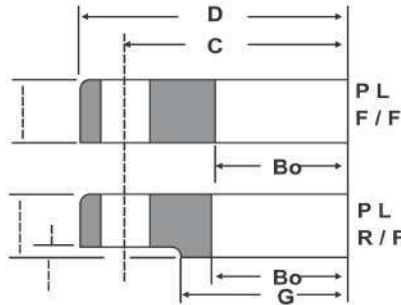
SHREE ARBUDA STEEL

Mobile : +91 8108105140 / 8850182889

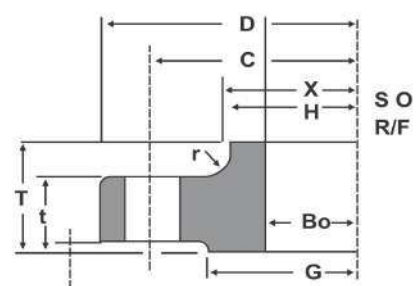
JIS Flanges 10 Kg/cm²



Blind



Plate



Slip-On

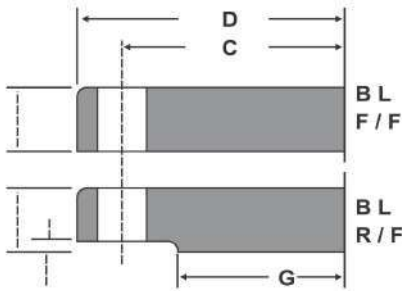
Pipe		Pipe	Bo	D		t	T	G	f	r	H	X	C	Holes	Bolt Dia.
inch	mm														
3/8	10	17.3	17.8		90	12	-	48	1	-	-	-	65	4	15
1/2	15	21.7	22.2		95	12	-	52	1	-	-	-	70	4	15
3/4	20	27.2	27.7		100	14	-	58	1	-	-	-	75	4	15
1	25	34.0	34.5		125	14	-	70	1	-	-	-	90	4	19
1-1/4	32	42.7	43.2	+0.5	135	16	-	80	2	-	-	-	100	4	19
1-1/2	40	48.6	49.1	-0	140	16	+1.0	85	2	-	-	-	105	4	19
2	50	60.5	61.1		155	16	-0	100	2	-	-	-	120	4	19
2-1/2	65	76.3	77.1		175	18	-	120	2	-	-	-	140	4	19
3	80	89.1	90.0		185	18	-	130	2	-	-	-	150	8	19
3-1/2	90	101.6	102.6		195	18	-	140	2	-	-	+1.5	160	8	19
4	100	114.3	115.4		210	18	-	155	2	-	-	-0	175	8	19
5	125	139.8	141.2		250	20	-	185	2	-	-	-	210	8	23
6	150	165.2	166.6		280	22	-	215	2	-	-	-	240	8	23
7	175	190.7	192.1	+1.0	305	22	32	240	2	6	208	212	265	12	23
8	200	216.3	218.0	-0	330	22	32	265	2	6	234	238	290	12	23
9	225	241.8	243.7		350	22	34	285	2	6	260	264	310	12	23
10	250	267.4	269.5		400	24	36	325	2	6	288	292	355	12	25
12	300	318.5	321.0	+1.5	445	24	38	370	3	6	340	346	400	16	25
14	350	355.6	358.1	-0	490	26	42	415	3	6	380	386	445	16	25
16	400	406.4	409.0		560	28	44	475	3	6	436	442	510	16	27
18	450	457.2	460.0	+1.5	620	30	48	530	3	6	496	502	565	20	27
20	500	508.0	511.0	-0	675	30	48	585	3	6	548	+2.0	620	20	27
22	550	558.8	562.0		745	32	52	640	3	6	604	-0	680	20	33
24	600	609.6	613.0		795	32	52	690	3	6	656	662	730	24	33
26	650	660.4	664.0	+2.0	845	34	56	740	3	6	706	+2.5	780	24	33
28	700	711.2	715.0	-0	905	34	58	800	3	6	762	-0	840	24	33
30	750	762.0	766.0		970	36	62	855	3	6	816	824	900	24	33
32	800	812.8	817.0		1020	36	64	905	3	6	868	876	950	28	33
34	850	863.6	868.0	+2.5	1070	36	66	955	3	6	920	+3.0	1000	28	33
36	900	914.4	919.0	-0	1120	38	70	1005	3	6	971	-0	1050	28	33
40	1000	1016.0	1021.0		1235	40	74	1110	3	6	1073	1081	1160	28	39
44	1100	1117.6	1123.0		1345	42	78	1220	3	8	1175	1185	1270	28	39
48	1200	1219.2	1224.0	+3.0	1465	44	82	1325	3	8	1278	+3.5	1380	32	39
54	1350	1371.6	1377.0	-0	1630	48	88	1480	3	8	1432	-0	1540	36	45
60	1500	1524.0	1529.0		1795	50	90	1635	3	8	1585	1600	1700	40	45



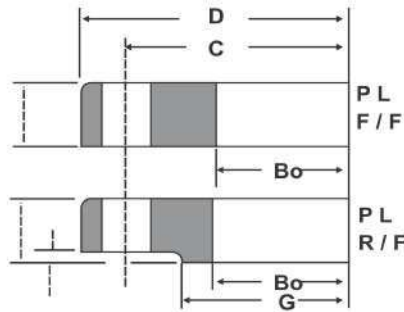
SHREE ARBUDA STEEL

Mobile : +91 8108105140 / 8850182889

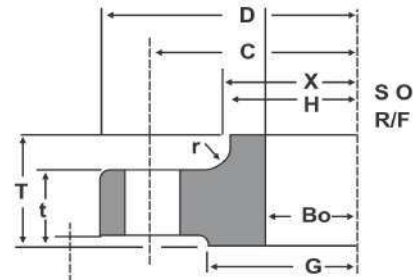
JIS Flanges 16 Kg/cm²



Blind



Plate



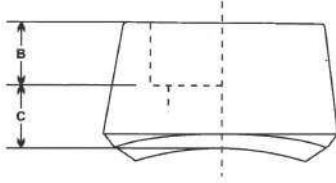
Slip-On

Pipe		Pipe	Bo	D	t	T	G	f	r	H	X	C	Holes	Bolt Dia.
inch	mm	Pipe	Bo	D	t	T	G	f	r	H	X	C	Holes	Bolt Dia.
3/8	10	17.3	17.8	90	12	16	48	1	4	26	28	65	4	15
1/2	15	21.7	22.2	95	12	16	52	1	4	30	32	70	4	15
3/4	20	27.2	27.7	100	14	20	58	1	4	38	42	75	4	15
1	25	34.0	34.5	125	14	20	70	1	4	46	50	90	4	19
1-1/4	32	42.7	43.2	135	16	22	80	2	5	56	60	100	4	19
1-1/2	40	48.6	49.1	140	16	24	85	2	5	62	66	105	4	19
2	50	60.5	61.1	155	16	24	100	2	5	76	80	120	8	19
2-1/2	65	76.3	77.1	175	18	26	120	2	5	94	98	140	8	19
3	80	89.1	90.0	200	20	28	135	2	6	108	112	160	8	23
3-1/2	90	101.6	102.6	210	20	30	145	2	6	120	124	170	8	23
4	100	114.3	115.4	225	22	34	160	2	6	134	138	185	8	23
5	125	139.8	141.2	270	22	34	195	2	6	164	170	225	8	25
6	150	165.2	166.6	305	24	38	230	2	6	196	202	260	12	25
7	175	190.7	192.1	325	26	40	250	2	6	216	222	280	12	25
8	200	216.3	218.0	350	26	40	275	2	6	244	252	305	12	25
9	225	241.8	243.7	385	26	40	325	2	6	266	272	335	12	27
10	250	267.4	269.5	430	28	44	345	2	6	304	312	380	12	27
12	300	318.5	321.0	480	30	48	395	3	8	354	364	430	16	27
14	350	355.6	358.1	540	34	52	440	3	8	398	408	480	16	33
16	400	406.4	409.0	605	38	60	495	3	10	446	456	540	16	33
18	450	457.2	460.0	675	40	64	560	3	10	504	514	605	20	33
20	500	508.0	511.0	730	42	68	615	3	10	558	568	660	20	33
22	550	558.8	562.0	795	44	70	670	3	10	612	622	720	20	39
24	600	609.6	613.0	845	46	74	720	3	10	666	676	770	24	39
26	650	660.4	664.0	895	48	77	770	5	10	704	726	820	24	39
28	700	711.2	715.0	960	50	80	820	5	10	754	776	875	24	42
30	750	762.0	766.0	1020	52	83	880	5	10	806	832	935	24	42
32	800	812.8	817.0	1085	54	86	930	5	10	865	885	990	24	48
34	850	863.6	868.0	1135	56	89	980	5	10	916	936	1040	24	48
36	900	914.4	919.0	1185	58	93	1030	5	10	968	986	1090	28	48
40	1000	1016.0	1021.0	1320	62	99	1140	5	12	1070	1098	1210	28	56
44	1100	1117.6	1123.0	1420	66	105	1240	5	12	1180	1200	1310	32	56
48	1200	1219.2	1225.0	1530	70	112	1350	5	12	1282	1302	1420	32	56
52	1300	1320.8	1326.0	1645	74	-	1450	5	-	-	-	1530	32	62
54	1350	1371.6	1377.0	1700	76	-	1510	5	-	-	-	1590	32	62
56	1400	1422.4	1428.0	1755	78	-	1560	5	-	-	-	1640	36	62
60	1500	1524.0	1529.0	1865	80	-	1670	5	-	-	-	1750	36	62



SHREE ARBUDA STEEL

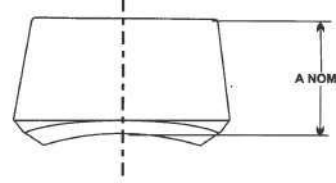
Mobile : +91 8108105140 / 8850182889



OLETS



NPT THREADS PER 81.20.1



Dimension of Branch Outlet Socket Welding as per MSS SP 97

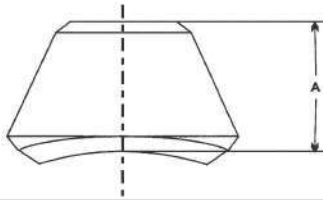
OUTLET DN	OUTLET NPS	B MIN	C MAX	
			3000	6000
6	1/8	6	19	
8	1/4	8	19	
10	3/8	10	21	
15	1/2	15	25	
20	3/4	2	27	32
25	1	25	33	37
32	1.1/4	32	33	40
40	1.1/2	40	35	41
50	2	50	38	43
65	2.1/2	65	46	52
80	3	80	51	
100	4	100	57	

Tolerance : 1/8 - 3/4 ± 0.8MM 1 - 4 ± 1.6mm
Dimensions are in millimeters

Dimension of Branch Outlet Threaded as per MSS SP 97

OUTLET DN	OUTLET NPS	A FACE OF FITTINGS TO CROTCH THREADED	
		3000	6000
6	1/8	19	
8	1/4	19	
10	3/8	21	
15	1/2	25	
20	3/4	27	32
25	1	33	37
32	1.1/4	33	40
40	1.1/2	35	41
50	2	38	43
65	2.1/2	46	52
80	3	51	
100	4	57	

Tolerance : 1/8 - 3/4 ± 0.8MM 1 - 4 ± 1.6mm
Dimensions are in millimeters



Dimensions are in millimeters
Tolerance : 1/8 - 3/4 ± 0.8mm
1 - 4 ± 1.6mm
5 - 12 ± 3.2mm
14 - 24 ± 4.8mm

Dimension of Branch Outlet - Butt Welding as per MSS SP 97

OUTLET DN	OUTLET NPS	A FACE OF FITTINGS TO CROTCH					
		Standard		Extra Strong		Schedule 160	
		Reducing	Full	Reducing	Full	Reducing	Full
6	1/2	16		16			
8	1/4	16		16			
10	3/8	19		19			
15	1/2	19	19	19	19	28	28
20	3/4	22	22	22	22	32	32
25	1	27	27	27	27	38	38
32	1.1/4	32	32	32	30	44	44
40	1.1/2	33	33	33	33	51	51
50	2	38	38	38	38	55	55
65	2.1/2	41	41	41	41	62	62
80	3	44	44	44	44	73	73
90	3.1/2	48	51	48	51	-	-
100	4	51	51	51	51	84	84



SHREE ARBUDA STEEL

“QUALITY MAKERS”

Office : Shop No. 9, Ground Floor, 91/95, Mukund Bhuvan, 3rd Kumbharwada, Dr. M.G. Mahimtura Marg, Mumbai - 400004.

Godown : Ground Floor, Shop No. 9, A-Wing, Parshuram Pupala Marg, Anjuman High School, Mumbai Central, Mumbai - 400008.

Factory : Industrial Gala No. 17, Aakash Industrial Estate, Gate No. 123, Plot No. 20, Village Padghe, Taluka Palghar, Dist. Palghar.



shreearbudasteel@gmail.com / export@shreearbudasteel.com



+91 8108105140 / 8850182889

www.shreearbudasteel.com